
FUNDING

The work we do is entirely voluntary but our equipment inevitably comes at a cost. To fully equip a new member costs in the region of £6000. We also have ongoing annual expenses to maintain and insure our existing equipment and pay for specialist training courses we must attend.



We are a charitable organisation and much of our money comes from local donations and fundraising activities. Currently there is no government funding for our day-


to-day work of providing Immediate Medical Care in Plymouth.

If you would like to help with fundraising activities or make a donation of any size please contact us via the details below.

Thank you for your support and interest.

In association with



South Western Ambulance Service  NHS Trust

Plims

Dr Ian Higginson
Emergency Department
Level 6 Derriford Hospital
PLYMOUTH
PL6 8DH

Telephone: 01752 792488
Email: ian.higginson@phnt.swest.nhs.uk
Website: www.plims.org.uk

Plims

Plymouth Locality Immediate
Medical Support

Providing emergency
medical care to the
people of Plymouth

Registered Charity: 1008872

About us

PLIMS is a charitable organisation first established in 1991. We are a local branch of BASICS (British Association of Immediate Care), a national charity established in 1977 with the aim of developing a network

of specialists in the UK to provide “Immediate care ... the provision of skilled medical help at the site of an accident or other medical emergency, or in transit”



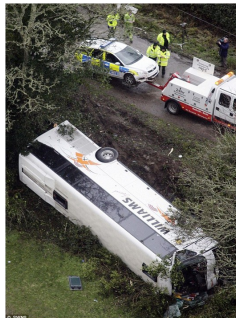
or other medical emergency, or in transit”

PLIMS exists to develop this service for the people of Plymouth and the surrounding area. Our members are all experienced doctors with specific training and qualifications in Immediate Care and do this work on a voluntary basis. By day, we come from diverse medical backgrounds including General Practice, Emergency Medicine, and Anaesthesia. When



called by South Western Ambulance Service, our members respond to emergency calls in their own vehicles. We provide advanced medical techniques and treatments to supplement that of the Ambulance Service.

OTHER ROLES



A crucial role we provide is medical management and support for large incidents or events. This ranges from large sporting events to major road collisions. These types of scenarios have the potential to generate many casualties. Our members are specifically trained in both the treatment of casualties in these settings as well as helping to coordinate the large-scale emergency service response.

TRAINING

As in all branches of medicine, one of the key responsibilities of a Pre-Hospital doctor is to pass on their knowledge and expertise to others. We are actively involved in helping provide training and advice to our colleagues in the Ambulance Service and regularly train with the other emergency services.

We have a mentoring and support system for doctors wanting to start their Immediate Medical Care career. This involves workshops and tutorials at our regular meetings as well as advice on other aspects of career development.

